



## TRUE TOWER II

from  
**450** THB/sqm.

### Contact

+66-0xx-xxx-xxxx

### Facilities



Well-maintained building



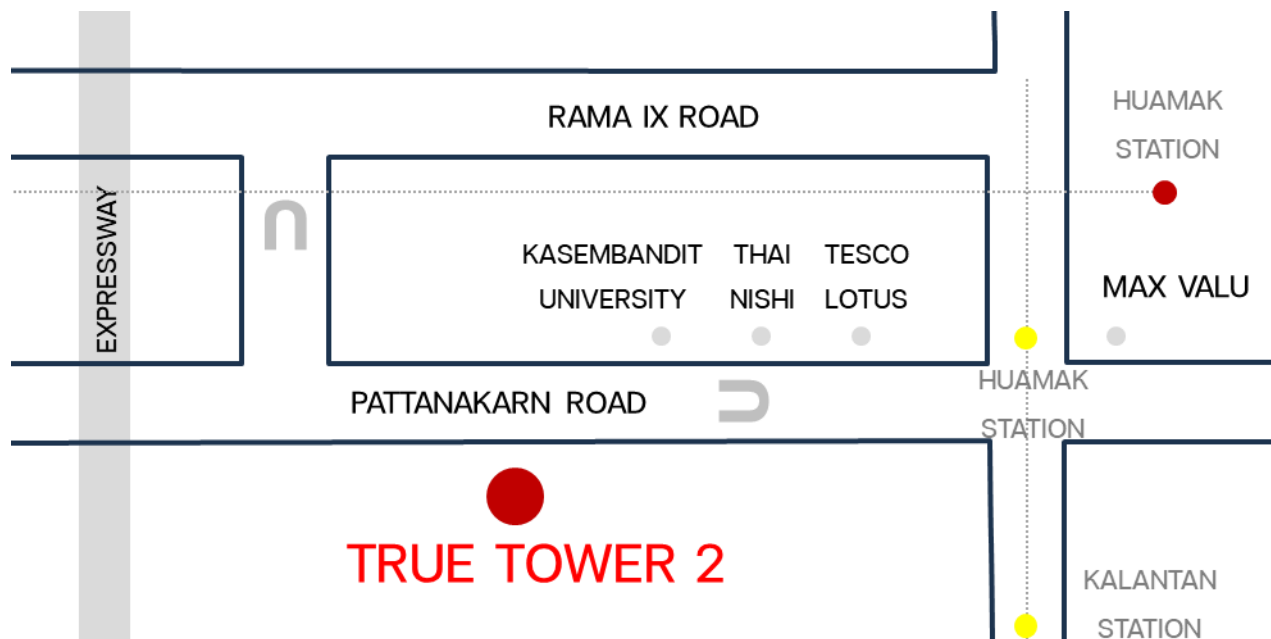
Up to 500 parking space



Various Spaces for rent

[www.bworkreit.com](http://www.bworkreit.com)

# TRUE TOWER II



## FACILITIES

|                         |  |
|-------------------------|--|
| BUILDING INFO           | 4 Towers (14 , 7 , 7 , 5 floors)                     |
| LEASE AREA PER FLOOR    | 700 - 1,500 sqm.                                     |
| CEILING HEIGHT          | 2.6 - 3.7 meters                                     |
| FLOOR LOAD CAPACITY     | 300 kg. per sqm.                                     |
| AIR CONDITIONING SYSTEM | Chilled Water System and VRV                         |
| LIFTS                   | 1,000 kg. passenger lifts , 1,600 kg. service lifts  |
| FIRE PROTECTION SYSTEM  | Fire hose cabinet per floor , Smoke & Heat Detectors |
| DRAINAGE                | Wastewater Treatment System , Drainage System        |
| SECURITY SYSTEM         | CCTV   |
| CAR PARKING             | 378 indoor , 51 outdoor                              |
| OPERATING HOUR          | Can be operate 24 hours 7 days                       |

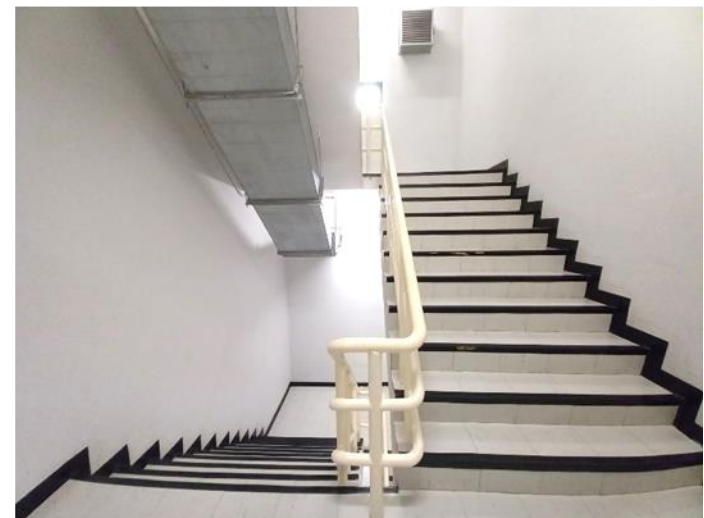
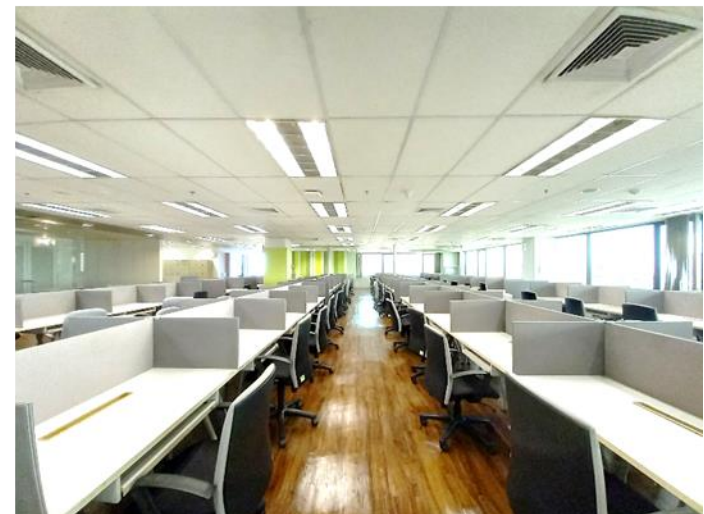
## TERMS & CONDITION

|                              |  |
|------------------------------|--|
| RENTAL RATE                  | 550 - 600 baht/sqm./month<br>(inclusive of air condition charge) |
| CAR PARKING                  | 100 sqm. Free 1 lot , extra 1,500 baht/lot/month                 |
| TERM OF LEASE                | 1 - 3 years term with option to renew                            |
| SECURITY DEPOSIT             | 3 months of rental and service charge                            |
| GRACE PERIOD FOR FITTING-OUT | 30 days free of charge   |
| ELECTRICITY CHARGE           | 6 baht per unit  |
| STORAGE AREA                 | 250 baht/sqm.  |

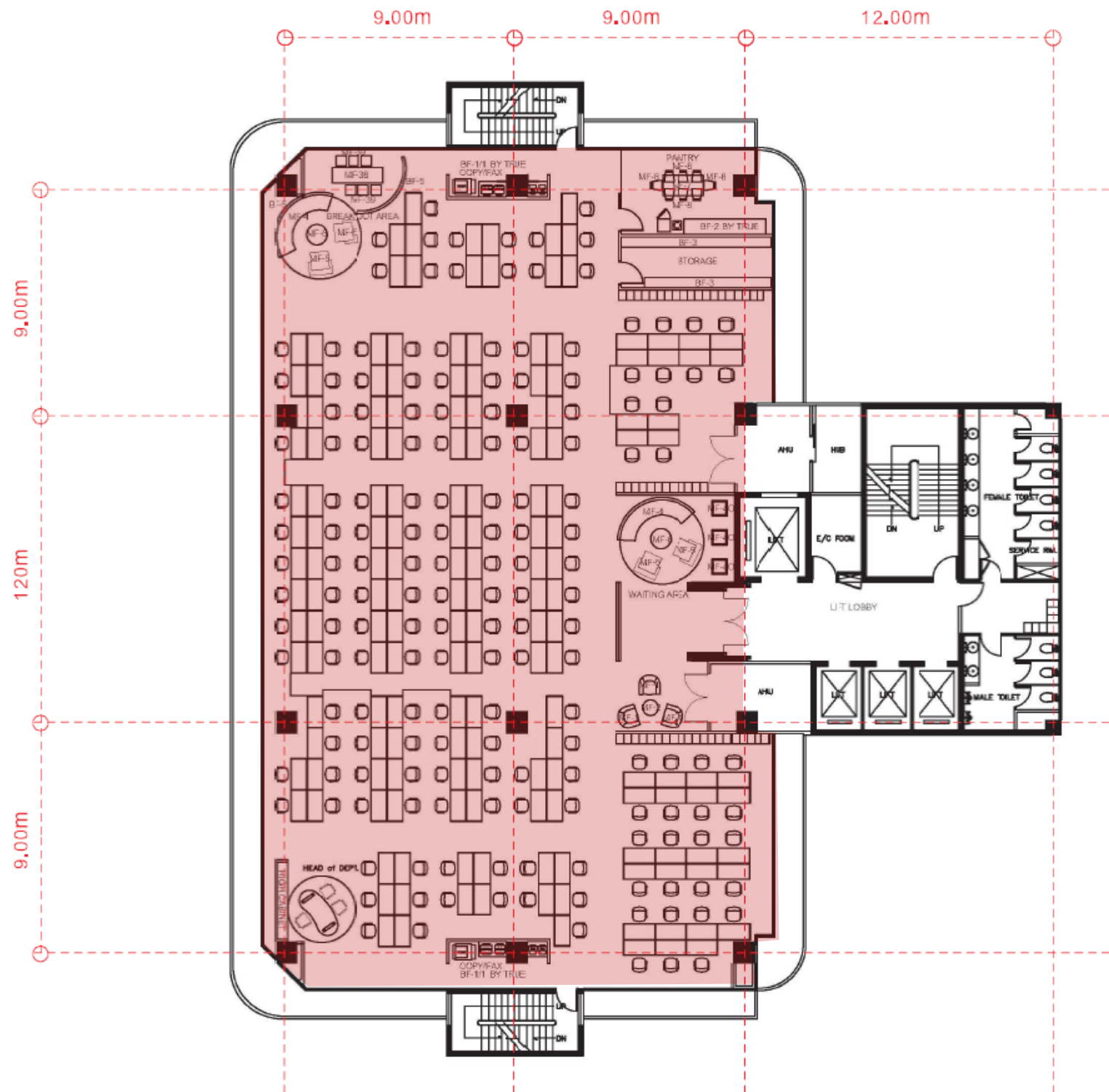
## TRANSPORTATION

|                         |   |
|-------------------------|---|
| BY CAR                  | 2 km. to Chalongrat Expressway<br>(300 m. to U-TURN tunnel) |
| BY YELLOW LINE MONORAIL | 3 km. to HUAMAK Station                                     |
| BY AIRPORT RAIL LINK    | 3.5 km. to HUAMAK Station                                   |

# BUILDING 1 : OVERVIEW



# BUILDING 1 : LAYOUT PLAN



**NLA = 709 sqm.**

# BUILDING 2 : OVERVIEW

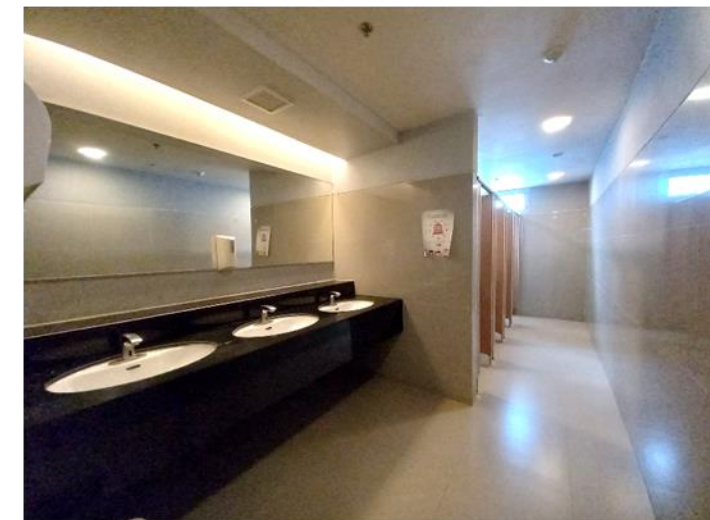
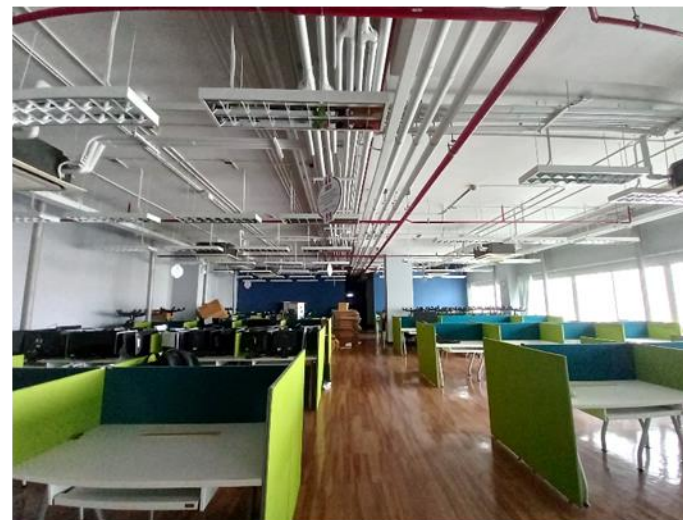
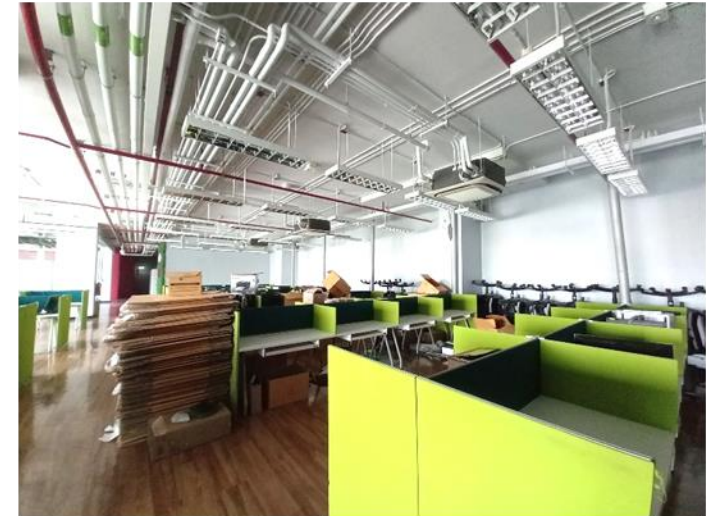


# BUILDING 2 : LAYOUT PLAN



**NLA = 1,185 sqm.**

# BUILDING 3 : OVERVIEW



## FLOOR 7

